



Australian
National
University

Accommodation Prospectus

Y/OUR
HOME

Where you belong

Build your community. Live on campus at ANU.

Choosing to live on campus at the Australian National University (ANU) means becoming part of a 6,500-strong residential community. More than just accommodation, living at ANU involves residing and learning together, building bonds through experiences.

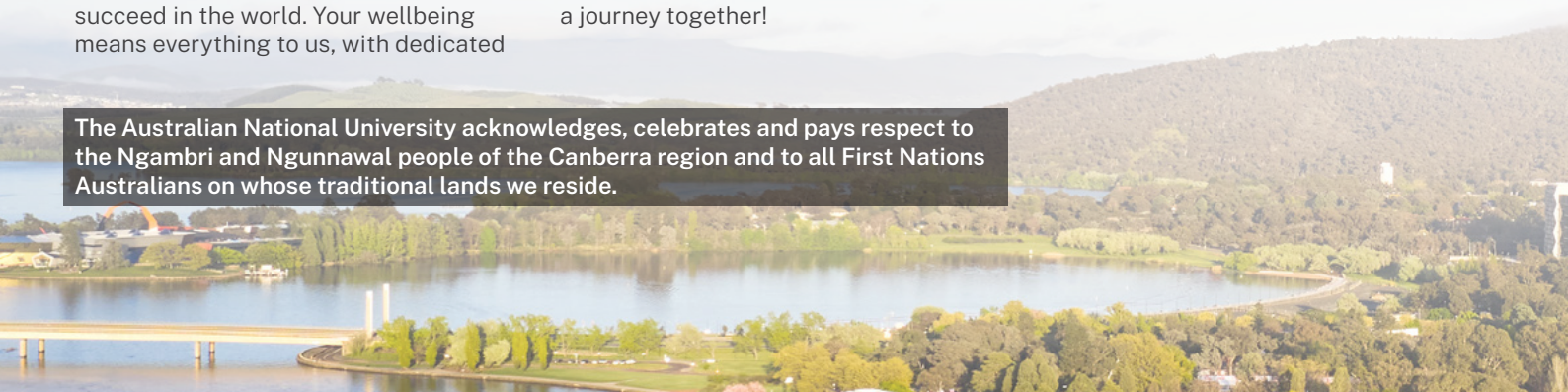
Here is where your best student life begins. A place where you discover your community, find the space to grow, establish a sense of belonging, have a voice, lean on the strength of peer support, and build the confidence to succeed in the world. Your wellbeing means everything to us, with dedicated

support within our residences and access to a team of professionally trained staff committed to your success. It is not just a place to stay, it is the beginning of your extraordinary journey.

Step into a world where all our residences are located on one vibrant campus, close to the city and the heart of the University. Whether you are looking for a close-knit community or the freedom of independent living, ANU has it all. We welcome you to become a part of something great, let's embark on a journey together!

- **6,489 beds**
- **18 undergraduate and postgraduate residences**
- **70+ nationalities**
- **24/7 wellbeing support**
- **Walking distance to the city centre**

The Australian National University acknowledges, celebrates and pays respect to the Ngambri and Nggunawal people of the Canberra region and to all First Nations Australians on whose traditional lands we reside.



Contents

Y/OUR HOME	1	Kinloch Lodge	23
Y/OUR CAMPUS	3	Lena Karmel Lodge	25
The ANU residence experience	3	Toad Hall	27
An inclusive campus	6	Ursula Hall Main Wing	29
Five tips for transitioning to campus life	7	Ursula Hall Laurus Wing	30
Y/OUR RESIDENCE	9	Wamburun Hall	31
Bruce Hall	9	Warrumbul Lodge	33
Burgmann College	11	Wright Hall	35
Burton & Garran Hall	13	Yukeembruk Village	37
Davey Lodge	15	Griffin Hall	39
Fenner Hall	17	Y/OUR APPLICATION	41
Graduate House	19	How to apply	41
John XXIII College	21	Y/OUR SCHOLARSHIPS	43



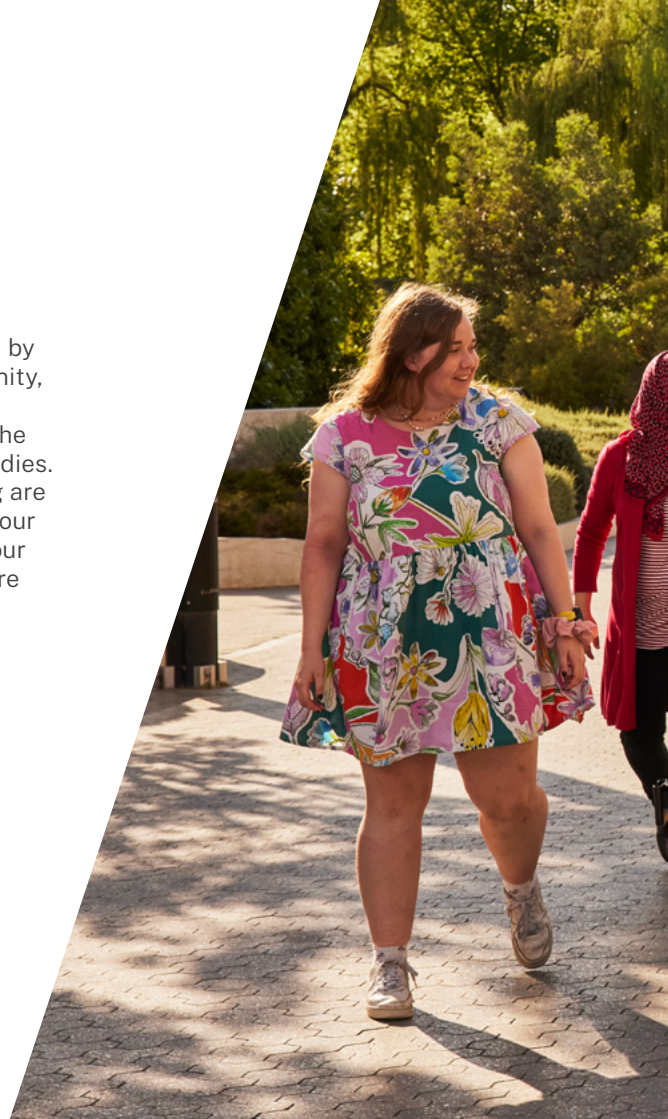
Become part of something greater

On behalf of the University and the Residential Experience team, I extend a warm welcome, inviting you to envision ANU as your next home — a place where exciting new experiences await, friendships grow, and your academic journey takes flight.

Our vibrant and diverse campus is not just a place to live; it's a network of support that extends across residences and the entire campus. While each of our residences boasts its unique history and character, they all share a deep sense of community. Wherever you are placed, you become an integral part of your community, with access to a network of residence staff and student leaders ready to provide support whenever needed.

Your journey at ANU is enriched by your involvement in the community, the connections you forge with fellow students and staff, and the dedication you put into your studies. Your safety, care, and wellbeing are our top priorities. Whether it's your first time away from home or your first time on campus, we are here to support you.

Felicity Gouldthorp
Director, Residential
Experience Division





The ANU residence experience

Living in one of our residences offers more than the shortest commute to class.

Accommodation guarantee

We guarantee an offer of accommodation in one of our residences or other approved accommodation to eligible students. Make sure to apply by the guarantee date, even if you have not received your admissions offer.

Check your eligibility

24/7 wellbeing support

Access round-the-clock support in your residence. Your residential staff, support team and peer network are here to provide wellbeing assistance or connect you with professionally trained staff at ANU Counselling and the Student Safety and Wellbeing Team. They can also offer support in areas like academic direction, developing healthy relationships, accessibility, and more.

Build your community

Living on campus is an easy way to make lifelong friends and build your community. Whether you're new to Australia or living independently for the first time, other students are also eager to make connections and meet new people.

Arts and sports competitions

Get a chance to proudly represent your residence in interhall arts or sports competitions, such as the popular

Big Night Out band competition. These highly anticipated events bring together the best and brightest from each residence to display their skills and team spirit. It's about more than just winning; it's about building a solid sense of unity and camaraderie in our residential community.

Endless activities and events

Within each residence, you will find a packed calendar of activities and events year-round. Immerse yourself in collaborative study sessions, celebrate diversity in the community through multicultural festivals, and attend balls that add a touch of glamour. There is always something exciting happening right where you live.

Academic support

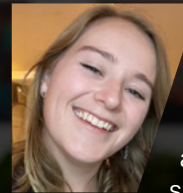
Get academic help right within your residence. The residential academic coordinator organises events to enhance academic learning such as peer-to-peer mentoring, while the residential support team can offer assistance with academic direction, navigating academic processes, and more.



“The Senior Resident (SR) system has provided excellent support to me throughout my time on campus and is a brilliant resource that has been present for the good and challenging times of my on-campus experience. Knowing that my SR is there to support me when I need it is incredibly reassuring.”

Migali Ennis-Short

Resident, Lena Karmel Lodge



“Living on campus really smoothed my transition to university. There are a range of support systems in place to help you with your degree, to find your community, and get the most out of your time at ANU. Plus, you’ll be close to all the beautiful nature that Canberra has to offer!”

Amy Fletcher

Resident, Burton & Garran Hall

Leadership opportunities

Step up as a residential student leader. From Residents Committee to Senior Residents to Community Coordinators, there are plenty of leadership opportunities to build up the skills you need for success and life after University.

Safety first

Safety is our top priority at ANU residences, and we are committed to ensuring the safety of all residents. For added security, we make sure that only residents have access to our buildings. If you ever need someone to walk you home at night, you can easily call for a security escort using the ANUOK app. The ANUOK app serves as the official safety and wellbeing application for our ANU community. It ensures prompt access to ANU Security, emergency information, vital safety tools, and an array of personal support resources.

Additional services

Access all the services for students right here on campus, such as bulk-billed medical services at the ANU Medical Centre in Kambri. Get support, advice, and assistance on academic appeals, legal matters, and financial hardship from various services, including the ANU Student Safety and Wellbeing team, the Dean of Students Office, and the Australian National University Students' Association (ANUSA).

The University provides students with the option to disclose experiences of harmful behaviours such as sexual misconduct, racism, or discrimination. Disclosures can be submitted online or by reaching out to the ANU Student Safety and Wellbeing team. The disclosure process allows individuals to share information either identified or de-identified, offering a means to access information and receive support.

Financial support

ANU offers numerous scholarships and financial support options to assist students from low socioeconomic backgrounds and those facing emergency financial challenges. See scholarships on page 43.

Other support services at ANU





An inclusive campus

With the largest student residential population in Australia, ANU proudly hosts one of the most diverse and inclusive communities and is dedicated to offering comprehensive support for all residents.

Accessibility and disability

Each residence works to accommodate various accessibility needs, including areas of mobility, sensory sensitivity, visual impairments, and hearing impairments. We collaborate with the broader University community to provide extensive support for diverse accessibility requirements. Additional specific details can be provided upon request. For example: wheelchair access, availability of quiet and sensory spaces, lighting consistency, doorhandle types, and hallway width.

Get more information:
[**uni.accom@anu.edu.au**](mailto:uni.accom@anu.edu.au)

Diversity

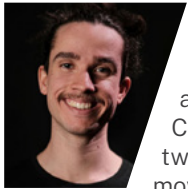
Student interests and diversity are represented through various advocate positions, including queer, accessibility, gender, international, and Indigenous positions. This ensures the diverse voices in our community are heard in decision-making and event planning. Our residences celebrate multicultural festivals, drag nights, International Women's Day, Wear It Purple Day, and more.

Our student leaders are given training to support our diverse residential cohort.

Five tips for transitioning to campus life

Moving from home to live on campus can be both exciting and challenging. Here are some tips from our residents to help ease the transition:

1 Be open-minded



"I've been a resident at Fenner Hall for five years and a Community Coordinator for the last two years. For anyone moving on campus, I

have three pieces of advice: 1) say 'yes' to every opportunity you are offered; 2) you never need to change who you are to fit in, and; 3) say hi to people in the lifts. You would be surprised at how far it gets you."

Josh Green

Community Coordinator, Fenner Hall

2 Connect with fellow residents



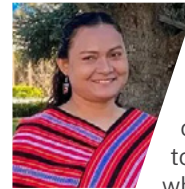
"Don't be afraid of making new friends and take heart in going outside of your comfort zones. The best thing about living on-campus is that you are on the same

journey as the person next to you. The most you can do is enjoy the experience together."

Epi Terbio

Senior Resident, Toad Hall

3 Explore the campus and its resources



"My advice to anyone looking to live on campus is to go for it. Living on campus will allow you to make a lot of friends who will help you to

better navigate all of the facilities and resources on offer at ANU."

Lilian Boton

Senior Resident, Toad Hall

4 Get involved



“The best parts of living on campus are the ISO and IAC (Interhall Sports Organisation, Interhall Arts Committee) competitions. They’re

such a great way to get involved and boost extracurricular activities. I try to attend all sports trainings and take part in as many arts events as I can such as Choir and 40 Hours of Film. I think getting around your fellow resses and supporting them when they represent your residence is not only incredibly wholesome but also a powerful way to promote a positive culture within the community.”

Anaina Langrana
Resident, Burgmann College

5 Seek support if needed



“During a challenging period when I faced monetary difficulties, the support I received from

the hall's staff was invaluable. They provided guidance and assistance in navigating through the financial hurdles, ensuring my well-being and academic pursuits were not compromised.”

Sai Hossain
Resident, Burton & Garran Hall



Bruce Hall

As the oldest undergraduate residential hall at ANU, Bruce Hall proudly continues its longstanding traditions in its new building, constructed in 2019.

Key points

- ✓ 372 beds
- ✓ Single rooms with shared facilities
- ✓ Catered (21 meals per week)
- ✓ 44-week contract

Established in 1961, Bruce Hall is the University's oldest undergraduate residential community, a testament to its enduring commitment to fostering academic excellence, personal growth, and a vibrant spirit. Evolving into an inclusive community that values diversity and strives for excellence, Bruce Hall has cultivated a self-regulating environment that champions individualism. Notably, some alumni have made significant contributions in fields such as the judiciary, Parliament, leading universities, and the corporate world.

The college-style accommodation features spacious student rooms with balconies, communal facilities, meeting spaces, and study areas. At the heart of this community is the magnificent Bill Packard Dining Hall, where residents gather to share in food and fellowship, shaping the unique sense of community that defines Bruce Hall. The rooftop garden serves as a tranquil space for reflection and camaraderie, striking a harmonious balance between solitude and active community engagement.

**Take a
virtual tour**



“Living on campus at ANU means so much more than a roof over my head; it's a supportive home

full of like-minded students and endless opportunities for growth. There's no better feeling than arriving home to a supportive community after a two-minute walk from class. Opportunities, such as dinner with dignitaries or interhall sporting competitions, are always at the touch of your fingertips”

Zac Bell
Senior Resident,
Bruce Hall



Bruce Hall Packard Wing

Constructed in 2004, the Packard Wing caters to later-year undergraduate and postgraduate students.

Key points

- ✓ 78 beds (62 single; 16 double)
- ✓ Studio apartments
- ✓ Self-catered (with 1 catered meal per week)
- ✓ 44-week contract

catered hall, paying solely for selected meals, with one catered meal per week included.

Explore
amenities
and features

Named after the founding Warden of Bruce Hall, Bill Packard OAM, the Packard Wing is tailored for later-year undergraduates or postgraduate students seeking a balance between social engagement and personal space. Residents in the Packard Wing have the flexibility to either cook their own meals or dine in the

Burgmann College

Burgmann College offers a friendly catered residence for undergraduate students.

Key points

- ✓ 258 beds
- ✓ Single rooms with shared facilities
- ✓ Fully catered (21 meals a week)
- ✓ 43.57-week contract

Burgmann College is not just a place to live; it's a vibrant, independent, and dynamic community that thrives on the energy, diversity, and potential of each resident. It's a place where you will forge lasting friendships, cultivate your passions, and grow as individuals.

Described as 'a home away from home,' Burgmann College offers fully catered undergraduate accommodation in its Homer and Barassi wings. Free internet

and laundry facilities are provided, and residents have access to a computer lab, music room, study spaces, and common areas. A dedicated team of residential and support staff provides academic assistance, wellbeing, and residential life programs. There are ample sporting, arts, and social opportunities to get involved in, and, more importantly, residents have a significant say in the running of the College.

**Explore
room options**





“As an international student who came to a foreign country, I knew nobody here and had no friends or family to rely on for support. It sounds almost unbelievable to say, but it took me less than a day of living at Burgmann to forge friendships that I am sure will endure for years to come. College events bring everyone together, and culture and socialisation are at an all-time high on campus! It quickly becomes more than just a place of residence; it becomes a place you can happily call home.”

Anaina Langrana

Resident, Burgmann College

Burgmann Undergraduate and Postgraduate Village

Burgmann Village, set in six buildings amid tranquil landscaped gardens, welcomes both undergraduate and postgraduate residents.

Key points

- ✓ 120 beds
- ✓ Self-contained studio apartments/shared apartments
- ✓ Self-catered or flexi-catered
- ✓ 47-week contract

six buildings featuring a mix of two-to five-bedroom apartments and single studios. Residents in the Village can choose from self-catered, flexi, and fully catered accommodation options.

**Learn more
about residence**

Burgmann Village is a vibrant and dynamic community of residents who live in self-contained studio or shared apartments on the Burgmann College campus. Nestled in tranquil landscaped gardens, the Village encompasses

Burton & Garran Hall

Burton & Garran (B&G) Hall not only houses a sizeable student population but also features one of the largest non-commercial kitchens at ANU.

Key points

- ✓ 518 beds
- ✓ Single rooms with shared facilities
- ✓ Self-catered
- ✓ 44-week contract

Established as separate residences in 1965, Burton and Garran Halls merged almost two decades later to become one of the largest residences on campus. Celebrating diversity as a core value, B&G's culture is one where residents, hailing from diverse backgrounds, come together to cook and share meals that showcase the cultural richness of their home countries.

The diversity of B&G promotes deep and meaningful connections, encouraging residents to embrace their authentic selves, building mutual respect and appreciation for differences. It is a welcoming home for those aspiring to be their best selves, contribute positively to the community, and treat everyone with the dignity they deserve.

**Explore
room options**



“Living at B&G Hall was a truly remarkable experience. What I loved most about being on campus was the sense of community and the rich multicultural environment. It provided a unique opportunity to meet people from diverse backgrounds and build lifelong connections. The daily interactions were filled with moments of togetherness – from cooking and eating together to watching movies and studying. These experiences not only enriched my social life but also expanded my cultural horizons. It was in this vibrant, close-knit community that I met my best friends, and I'll forever cherish those bonds.”

Sai Hossain

Resident, Burton & Garran Hall



 Australian
National
University

Davey Lodge

For those embracing new experiences alongside academic pursuits, Davey Lodge provides self-contained apartments, including two- to five-bedroom multishare options.

Key points

- ✓ 465 beds
- ✓ Self-contained studio apartments/ shared apartments
- ✓ Self-catered
- ✓ 48-week contract

Davey Lodge is named after the accomplished local Canberran Matthew Davey, a doctor, ballroom dancing and judo instructor, record-holding paragliding pilot, St John's Ambulance volunteer, ANU medal winner, decorated Navy reservist, and website guru. Tragically, Matthew Davey lost his life while providing humanitarian relief in Indonesia after the 2004 Boxing Day tsunami. In 2009, the opening of Davey

Lodge commemorated Matthew Davey as an inspiration for those fortunate enough to reside within.

With 465 rooms in a uniquely designed H-shaped building, Davey Lodge features two courtyards — one dedicated to nature and tranquil study areas, and another filled with sporting games like mini golf. The Davey community embodies the spirit of embracing new experiences alongside academic pursuits.

**Explore amenities
and features**



“The location of the Lodges is perfect for getting to classes and exploring the city. I appreciate and enjoy the sense of community

that living in student accommodation provides, embracing diverse and independent lifestyles. Choosing to live at the Lodges is a great way to enhance your university experience, and I would highly recommend it to any student looking for a comfortable and convenient place to live.”

Rachael Cumming

General Manager -
Lodges, UniLodge @ ANU



Fenner Hall

Fenner Hall in Kambri is just a stone's throw away from cafes, eateries, playing fields, medical facilities, central teaching facilities and other services.

Key points

- ✓ 452 beds
- ✓ Single rooms with shared facilities
- ✓ Self-catered
- ✓ 44-week contract

The Fenner Hall community prides itself on being inclusive, guided by values of independence, respect, curiosity, and a willingness to do things just a little bit differently. As one of the first halls on campus with student leaders and staff trained in Restorative Practice, the Fenner community and spirit are created and nurtured by thoughtful and passionate advocates, through intentional and mindful practices

of residents, and a desire to implement ongoing positive change for residents from around Australia and the world.

At the heart of Fenner is the Warren Café, managed by residents for residents. It serves as a central gathering place where residents engage in daily social interactions and cultivate a strong sense of camaraderie. Facilities for communal cooking, dining, laundry, study, and social spaces are available, along with the opportunity to participate in a vast range of in-house and inter-hall sporting, arts, sustainability, and social events carefully curated by student leadership teams throughout the year.



“All residents make a conscious effort, of which I am extremely proud, to address the cultural diversity needs of

the hall. One instance that comes to mind is one of our Indigenous students taking the lead to host Indigenous chats and create meaningful connections. It’s their initiatives that enrich our community and improve the overall culture and development to address the hall’s cultural diversity needs.”

Nikeata Dyer

Residential Wellbeing Coordinator,
Fenner Hall

**Take a
virtual tour**



Graduate House

Graduate House is a thriving and supportive residence of scholars pursuing postgraduate research or coursework degrees.

Key points

- ✓ 150 beds
- ✓ Self-contained studio apartments
- ✓ Self-catered (with a weekly House dinner)
- ✓ 52-week contract

Graduate House was founded in 1971 to provide housing for full-time graduate students. In 1998, it was relocated to its current position next to University House. Graduate House offers self-catered accommodation in single and double rooms, creating a peaceful environment that is ideal for postgraduate and collegiate life. The central location and collegial atmosphere make it an excellent choice for postgraduate residents seeking a mature, friendly, and supportive

residence within easy walking distance of research schools, recreation centres, libraries, and other ANU amenities, as well as the city centre.

As a resident of Graduate House, you will share the tradition of weekly House dinners and a range of academic, cultural, and social activities organised by the Graduate Common Room Committee. The House provides a welcoming and supportive community for postgraduate students, offering a range of opportunities to engage with fellow residents and make the most of your time at ANU.

**Explore amenities
and features**





“This multicultural residence thrives on diversity and respect, offering a unique opportunity to share much among the colourful cultures. This includes the weekly House Dinners, community activities, as well as knowledge sharing through research talks, workshops, and panel discussions. Every month, there's a plethora of academic and multicultural events and gatherings to choose from, making life at Graduate House an enriching experience. Most importantly, through these activities, we had several opportunities to make friends who are on similar postgraduate journeys as us. We made friends here for life.”

**Achalie Kumarage and
Madhawa Perera**
Residents, Graduate House

John XXIII College

Johns XXIII College embodies a Catholic collegiate community enriched by Dominican traditions, providing undergraduates with a fully catered experience.

Key points

- ✓ 315 beds
- ✓ Single rooms with shared facilities
- ✓ Fully catered (21 meals a week)
- ✓ 44-week contract

John XXIII College, an affiliate of ANU, offers more than a place to eat and sleep: it offers a home away from home. A place where students feel part of a prestigious academic community with student-led mentoring and staff guidance and support. A place where students are encouraged to get involved in all elements of campus life, from sport, to art and music, to leadership. Our students are invested in the College and in each other and encourage one another to be the best version of themselves. This diverse community,

spanning first-year through to later-year students, is inclusive of individuals of all faiths and cultural backgrounds.

Named after Pope John XXIII, Angelo Giuseppe Roncalli, the College was inaugurated by Malcolm Fraser, then Commonwealth Minister for Education and Science, on 22 February 1969. The College's coat of arms incorporates elements of the Dominican Order, the flow of water through Sullivans Creek, and our vision.

**Explore
room options**



“One of the greatest experiences of my first year at ANU was participating in ‘Inward Bound’ – an ultra-long-distance race that

involves being dropped in a team of four in an unknown location with maps and a compass and having to run to a set finishing point. The sense of community and collective achievement of all who participated and supported ‘the runners’ has created some of my best memories of university so far and my time at John XXIII College.”

Hugo Bennett

Resident, John XXIII College



VERITAS
S IN VERITATE

JOHN XXIII COLLEGE

Kinloch Lodge

Located closest to the city centre on campus, Kinloch Lodge offers self-contained apartments, including two- to six-bedroom multishare options.

Key points

- ✓ 502 beds
- ✓ Self-contained studio apartments/ shared apartments
- ✓ Self-catered
- ✓ 48-week contract

Kinloch Lodge, guided by the ethos "Fac Ut Tua" (make your own), is a tribute to Dr Hector Kinloch, an esteemed lecturer and Dean of Students at ANU in 1966. Born in Boston, Massachusetts in 1927, he excelled academically at Cambridge and had a broad interest in cultural affairs. Later, he became the first Warden of Fenner Hall on Northbourne, continuing his commitment to students.

Being the closest on-campus accommodation to the city centre and just a five-minute walk from the heart of the ANU campus, Kinloch Lodge offers unparalleled convenience. Situated near public transport, shops, banks, and dining options, it provides a well-connected and lively living experience.

[Learn more about residence](#)



“Living on campus at Kinloch Lodge has been a cornerstone of my university experience since commencing in

2020. Throughout my time here I have experienced a strong sense of community and have engaged with co-curricular and leadership opportunities that helped me grow as I found my feet away from home.”

Noah Baldwin

Community Coordinator, Kinloch Lodge



Lena Karmel Lodge

Lena Karmel Lodge provides a vibrant community and unique living experience with self-contained apartments and a distinctive Z-shaped architectural design.

Key points

- ✓ 558 beds
- ✓ Self-contained studio apartments/shared apartments
- ✓ Self-catered
- ✓ 48-week contract

Lena Karmel Lodge, named after the wife of economist and former ANU Vice-Chancellor (1982-87) Professor Peter Karmel, is a nod to the couple's significant contributions to the nation's University. Lena and Professor Karmel generously supported the University through their philanthropy, notably the ANU School of Art & Design and the ANU School of Music. The Peter and Lena Karmel Anniversary Scholarship recognises exceptional graduating students in art and music each year.

The Lodge boasts a vibrant and diverse community, attracting students from around the globe in a typical year. The architectural design, with its unique Z-shape, provides residents with a variety of views – from the lively cityscape to a serene mountainous backdrop. It offers a unique blend of urban vibrancy and natural serenity, allowing residents to enjoy the rooftop garden and connect with nature while remaining conveniently close to the best of Canberra.

**Take a
virtual tour**



“As an international student, I love living on-campus because I’m always surrounded by our community.

Moving away from family and support networks can be daunting, but being a part of the on-campus community means that you’re never alone or isolated. I love being able to just walk down the corridor and knock on someone’s door for a chat, or a cup of tea.”

Migali Ennis-Short

Resident, Lena Karmel Lodge



KINGSLEY DRILL HALL GALLERY

DANCE CANBERRA

CANBERRA DANCE THEATRE

Toad Hall

Nestled beside Sullivan's Creek, Toad Hall is home to an intimate global postgraduate community, often referred to by its residents as a mini-United Nations.

Key points

- ✓ 227 beds
- ✓ Single rooms with shared facilities
- ✓ Self-catered
- ✓ 44-week contract

Toad Hall, founded in 1974 as the University's first self-catered residence, arose amid a surge in demand for alternative student housing for later-year students. The name 'Toad Hall' was chosen by students as a creative departure from traditional labels, drawing inspiration from the nearby willows and the character Mr Toad from 'The Wind in the Willows.' This unique name, approved by the University, reflects the distinct character

shaped by architect John Andrews, encouraging engagement and the "free transaction of ideas" throughout the building.

Home to 227 residents, primarily graduate students from Australia and more than 30 countries around the globe, Toad Hall embraces the motto "unity in diversity." It stands as a microcosm of the United Nations, hosting an annual Multicultural Festival as its signature event.

**Explore
room options**



"Living on campus comes with a great social life. I have great friends in the Research School of Chemistry and at Toad Hall. Making friends has come so easily as Toad always has plenty of events, and the block format layout makes socialisation a natural consequence. I never ate alone at home, and at Toad, I never do either."

Lilian Boton

Senior Resident, Toad Hall



“It has been an enormous privilege to serve the Toad Hall community for the past 14 years. The community has certainly enriched my life, as it has others,

through research presentations, social events, Hall-wide talks and panels, Multicultural Festivals, and the sharing of concerns, thoughts and ideas in special groups such as our parents & carers group and Higher Degree by Research group. The only residence on campus named by its first residents, Toad has a special history and character of family, fun and formation.”

Dr Ian Walker

Head of Residence, Toad Hall

Ursula Hall Main Wing

Ursula Hall, affectionately referred to as “Ursies”, stands as one of the more intimate accommodations on campus where everyone knows each other.

Key points

- ✓ 208 beds
- ✓ Single rooms
- ✓ Fully catered (21 meals a week)
- ✓ 44-week contract

Founded by the Ursuline order in 1968 and named after their patron saint, Ursula Hall is ANU operated and provides catered accommodation to predominately undergraduate students. Together with the Laurus Wing, the two buildings make up the Ursula Hall community—one of the smallest and most tight-knit residential communities on campus with a vibrant academic and cultural history of more than 55 years.

Ursula Hall is proud of its rich community of academic excellence and collegiate spirit. Our residence brings together students from a variety of backgrounds, countries, faiths and beliefs, all bringing with them an astonishing range of life experiences. The staff and residents deeply appreciate this diversity, recognising it as a source of great strength and pride.

Take a
virtual tour



“Residential halls are their own little communities, giving you not only a place to call home in Canberra,

but also a family. There is always someone who is up for a chat or wants to play a round of courtyard cricket or watch Thursday night footy. It’s these little daily interactions that are the best part of on-campus living.”

Alicia Humphrey
Resident, Ursula Hall





Ursula Hall Laurus Wing

The Laurus Wing, part of Ursula Hall, is a postgraduate self-catered residence with self-contained apartments.

Key points

- ✓ 188 beds
- ✓ Self-contained studio apartments
- ✓ Self-catered + one catered meal per week
- ✓ 48-week contract

While residential fees include one catered meal per week in the Main Wing Dining Hall, many residents choose to purchase additional meal tickets and are welcome to dine in the Main Wing as often as they like.

The six-storey Laurus Wing, launched in 2010 and consisting of 188 single and double units, serves as a self-contained, self-catered residence for postgraduates and later-year undergraduates. Laurus Wing has its own distinct international community where cultural diversity is celebrated.

**Explore
amenities
and features**

Wamburun Hall

Wamburun Hall, a self-catered residence, stands out with unique facilities such as the fifth-floor sky lounge and a central quad.

Key points

- ✓ 500 beds
- ✓ Single rooms with shared facilities
- ✓ Self-catered
- ✓ 44-week contract

Named after the local Indigenous word for large black cockatoo, Wamburun Hall has been home to 500 residents since its establishment at the base of Black Mountain in 2019. Wamburun fosters a culturally diverse, inclusive, and supportive community where residents benefit from shared spaces like the spacious dining hall and communal kitchen. This allows for individual or

collaborative cooking, with a backdrop of beautiful native bushland. For a leisurely afternoon, residents can ascend to the fifth-floor sky lounge to revel in breathtaking views of Black Mountain. The sunlit quad at the centre of the building showcases communal garden beds, creating a delightful space for a barbecue, reading a book, relaxing in a hammock, or engaging in a casual game of ball with friends.

**Take a
virtual tour**



“I have had a wonderful experience living at Wamburun Hall over the past couple of years. It was a great way to make lots of connections and meet lifelong friends. The events and activities organised by the hall and student leadership ensured that the students felt supported and continued to make connections with new people throughout the time that I lived there.”

Ella Banks

Resident, Wamburun Hall



Warrumbul Lodge

Warrumbul Lodge offers self-contained units, including two- to six-bedroom multishare.

Key points

- ✓ 419 beds
- ✓ Self-contained studio apartments/shared apartments
- ✓ Self-catered
- ✓ 48-week contract

Warrumbul, meaning ‘youth’ in the Ngunnawal language, embraces the motto ‘house of youth’, which resonates throughout the Lodge’s atmosphere. Echoing Pablo Picasso’s sentiment that youth has no age, Warrumbul Lodge nurtures a positive community, welcoming individuals from diverse backgrounds, from new undergraduates to postgraduates starting a new

chapter in their lives. With 429 rooms, it cultivates a smaller, more intimate community compared to the other UniLodge apartments but offers the same facilities and services.

Explore amenities and features



“The apartments at Warrumbul Lodge are a space for personal development and a stepping stone for independence.

We build a program for everyone that nurtures individuality and respects choice. With such a large community, there is always someone like-minded. We create an environment to facilitate connections on a variety of scales so that everyone can find their space within their home. Reflect your individuality within your studio dwelling and use our common spaces to engage more broadly, or give multishare living a go.”

James Jeffress

General Manager –Portfolio,
UniLodge @ ANU



Wright Hall

Wright Hall, named after the family of philanthropist Dr Louise Tuckwell (nee Wright), stands near the heart of the University.

Key points

- ✓ 428 beds
- ✓ Single rooms with shared facilities
- ✓ Flexi-catered (16 meals per week)
- ✓ 44-week contract

Tenacitas, Comitatus, Gratia ("get on with it, get on with each other, and be grateful") captures the essence of Wright Hall's ethos: to nurture a collaborative and responsible community of learners to bring out their best for themselves and others.

Located at the western end of University Avenue, near the heart of ANU, Wright Hall has offered undergraduates a modern and inviting place to call home since it opened in 2019. The rooftop pavilion, renowned for its panoramic views, perfectly complements well-designed study spaces, cultivating a live-in learning environment. Residents follow a flexi-catered plan of 16 meals per week, with the option to purchase additional meals if needed.

**Take a
virtual tour**



"The culture at Wright Hall is unmatched. I have always felt a great sense of belonging and have made friends for life. Being a part of this community has opened many diverse opportunities I wouldn't have otherwise had. Wright has shaped my time at ANU and has given me memories and experiences that I'll cherish forever."

Ingrid Skipworth
Resident, Wright Hall



WRIGHT
HALL

Yukeembruk Village

Yukeembruk (pronounced yu-kum-bruuk) stands as the largest on-campus residence, providing a tranquil setting for a diverse residential community.

Key points

- ✓ 731 beds
- ✓ Single rooms and ensuites
- ✓ Self-catered
- ✓ 44-week contract

Established in 2023, Yukeembruk Village proudly accommodates 731 students, creating a truly diverse community welcoming undergraduate and postgraduate students from Australia and around the globe. Yukeembruk, a name gifted by the local Ngunnawal people, honours the Crow totem significant to the Indigenous community in this region. We are privileged to have been given that name.

Nestled amidst the tranquillity of the bush, Black Mountain, and Sullivans Creek, Yukeembruk provides a serene environment for its residents. When you set foot in Yukeembruk, you feel at peace in the surroundings, away from the pressure of studying on campus. The residence, designed in collaboration with our students, features an array of social and study spaces for your convenience. We invite you to join us in shaping the culture of Yukeembruk Village, our newest residence.

**Explore
room options**

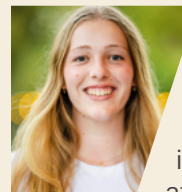




“When I talk with residents, they say that what separates Yukeembruk from others, what they enjoy about our community, is that with a community this size you can be who you want to be. You will be respected, welcomed and you will find others like you.”

Scott Walker

Head of Residence, Yukeembruk Village



“I have absolutely loved the independence I’ve gained from living on campus. The inclusivity and diversity at Yukeembruk have helped me form some really special friendships, and being part of the leadership team in the first year has been such a wonderful opportunity. I am so excited to see how Yukeembruk continues growing in the coming years!”

Madi Lyster

Resident, Yukeembruk Village

Griffin Hall

Griffin Hall is a welcoming space for students who live off campus but want to be part of an on-campus community.

Key points

- ✓ Join at any point of the semester

Founded in 2010, Griffin Hall is the University's only non-residential community for students who live off-campus. Located near the heart of campus and next to ANU Sport, the Hall features a dedicated common room equipped with amenities like a study area and kitchenette, creating a conducive members-only space for relaxing and socialising.

Griffin Hall actively participates in both the Interhall Sports Organisation and Interhall Arts Committee competitions, offering a diverse range of sports and arts events. Additionally, the Hall organises various social events and provides support through Community Assistants and Academic Mentors, fostering personal development and leadership opportunities for its members.

Find out more



“We have an amazing mix of students at our Hall: international, domestic, undergraduate, postgraduate, students from regional and remote areas, and Canberra locals. Because the students choose to join our community, the genuine engagement and care for the Hall is something special and I really enjoy working with them.”

Marieke Bosman
Non-Residential Hall Coordinator,
Griffin Hall



How to apply

There are two application pathways to secure accommodation at ANU: a direct route for domestic Year 12 school leavers, and a standard route for everyone else.

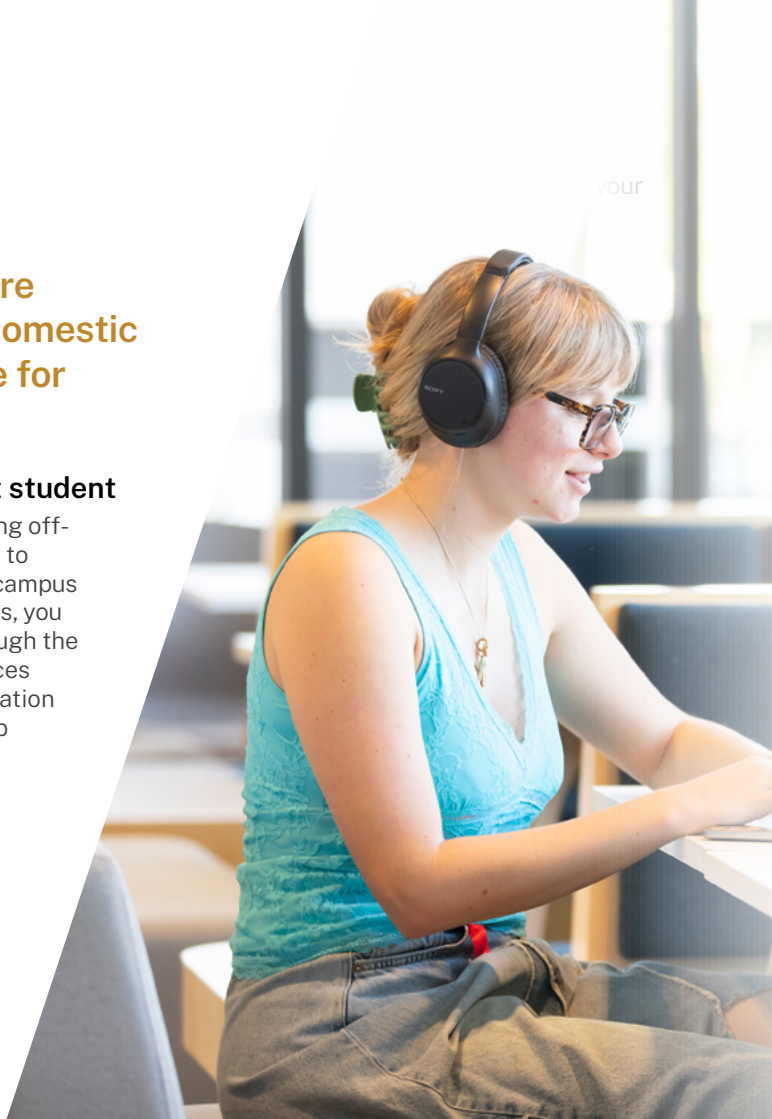
Accommodation application timelines

Each application pathway has its own process. Stay ahead by familiarising yourself with the timelines of your pathway.

Explore
pathway
timelines

Apply as a current student

If you are currently living off-campus and would like to move to one of our on-campus accommodation options, you can apply directly through the Accommodation Services Portal. Our Accommodation Services team can help guide you through the application process provide you with information available housing.



ALL APPLICANTS

Step 1 Compare and then choose your preferred residence

Step 2 See if you fall under the accommodation guarantee.

FOR DIRECT APPLICANTS

Step 3 Your accommodation application is included as part of your direct application to ANU.

Step 4 Select your preferred residence.

Step 5 Receive and accept first round offer. You will have an opportunity to apply for a change of preference if you had a change of heart.

Step 6 Receive and accept a second round offer after your ATARs are released.

Step 7 Make payment to secure your accommodation.

Step 8 Receive Welcome Pack with all the information you need before you move in.

FOR STANDARD APPLICANTS

Step 3 Log in to the Accommodation Services portal to submit a separate accommodation application.

Step 4 Select your preferred residence.

Step 5 Receive and accept accommodation offer.

Step 6 Make payment to secure your accommodation.

Step 7 Receive Welcome Pack with all the information you need before you move in.

Residential scholarships

ANU provides a range of scholarships and other financial assistance options to support students with accommodation-related costs.

The Tuckwell Scholarship

\$26,000 a year
(2024 rate, increasing annually)

The Tuckwell Scholarship, a transformative undergraduate program, offers up to 25 scholarships annually, providing personal development opportunities and an exclusive alumni network. Valued between \$76,000 to \$136,000, the scholarship covers three to five years of undergraduate study at ANU.

Apply now

Bill Packard Scholarship

\$8,000 a year

Each year, Bruce Hall awards the Bill Packard Scholarship, providing financial assistance to students facing financial challenges who are relocating from outside the Canberra region for their undergraduate studies at ANU.

Bobbie Fenner Scholarship

\$9,000 a year

ANU annually offers the Bobbie Fenner Scholarship to support a student from a remote or regional background residing in Fenner Hall. This scholarship is generously funded by Frank Fenner in memory of his late wife, Bobbie Fenner.

Bright Horizons Scholarship

\$8,000 to \$28,000 a year

ANU may offer the Bright Horizons Scholarship each year, providing financial support to bright, high-achieving students who have faced adversity in pursuing their studies during their time at university.

ANU Changing Futures Scholarship

\$8,000 a year

The ANU Changing Futures Scholarship is provided by the University and aims to offer financial support to students who have faced challenges so they may pursue their studies at ANU.

**Find out
more about
financial help**

Emergency Accommodation Bursary

The Emergency Accommodation Bursary is a form of financial assistance offered by the Residential Experience Division to help students facing unexpected hardship. Each application is individually considered by a review committee in an effort to provide the most comprehensive support possible. Any student enrolled in a program that leads to a degree, certificate or diploma issued by ANU can apply by submitting documentary evidence of their financial hardship.





Australian
National
University

Contact us

Residential Experience Division

Building 95, Fulton Muir Building
The Australian National University
Canberra ACT 2600

+61 2 6125 1100

uni.accom@anu.edu.au

study.anu.edu.au/accommodation

facebook.com/livingatANU

instagram.com/livingatANU

TEQSA Provider ID: PRV12002 (Australian University)

CRICOS Provider Code: 00120C